



**YOU CAN HELP
VETS SUPPORT ANIMAL
WELFARE RESEARCH AND
COMMUNITY EDUCATION**

Name.....
Address.....
.....
State..... Postcode.....
Phone.....
Email.....
The veterinary practice I use is.....
.....

To make a donation to the Animal Welfare Trust
please visit **www.ava.com.au/donate/**

I would like to receive information about:

- ☐ making a bequest to the Trust
- ☐ becoming a Trust Sponsor

YOU CAN HELP VETS SUPPORT ANIMAL WELFARE RESEARCH AND COMMUNITY EDUCATION

It is difficult to imagine a world without animals. Wherever we look, we see animals making valuable contributions to the quality of our lives. Our aim is to improve the quality of their lives in return.

The AVA Animal Welfare Trust was established by the veterinary profession to fund research and education programs which make a positive and significant difference to animal welfare.

If you would like to help us, or want to know more about our work, please complete the form and return to the address below.



Australian Veterinary Association Ltd
Animal Welfare Trust
www.ava.com.au



Australian Veterinary Association
Animal Welfare Trust

WORKS TO IMPROVE THE WELFARE AND WELLBEING OF ALL OUR ANIMALS





WHAT IS THE ANIMAL WELFARE TRUST?

Like you, veterinarians worry about the welfare of animals – pets, livestock, sporting, zoo and wild animals. We all want their lives to be better, but what do they need? What can we do to actually help?

The Trust funds research to help answer these questions, as well as education programs to inform community members.

The Trust:

- supports research to improve animal welfare
- supports education projects to improve animal-care standards
- distributes current welfare information
- stimulates public interest in animal welfare
- raises funds for these purposes

WHY IS THE ANIMAL WELFARE TRUST IMPORTANT?

We have an obligation to ensure animals are treated humanely and cared for appropriately. The welfare and care of animals must be underpinned by contemporary science and ethical principles.

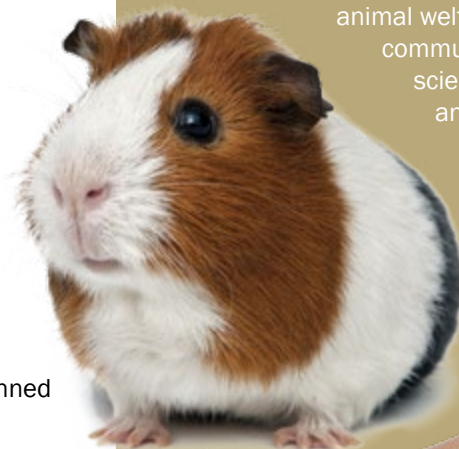
SUPPORT FROM VETERINARIANS

Veterinarians are fortunate to work with animals and be in a position to recognise both the huge contribution animals make to our society and the potential risks to their welfare. Veterinarians established the Animal Welfare Trust with an initial contribution from the Australian Federation for the Welfare of Animals (AFWA) and funding from members of the Australian Veterinary Association (AVA). The Trust now relies on donations from veterinarians and members of the public.

The Trust is administered by voluntary Trustees, each a veterinarian with expertise in, and active commitment to, the welfare of all animals. Trustees identify areas of real need and support research with a real chance of making a positive difference to animals.

Veterinarians provide more than \$10 million/year of free services to animals and the disadvantaged in our community. For example, they treat injured wildlife and strays, provide food, shelter, care, medical and surgical services before releasing or re-homing these animals to enjoy a positive future.

The Trust gives veterinarians yet another avenue to contribute to help all Australian animals by supporting essential animal welfare research and community promotion of science-based enhanced animal welfare.



Some previous research funded by the Animal Welfare Trust:

- Solutions to the cat overpopulation problem
- Physiological and behavioral responses of sheep to ammonia from urine and faeces in intensive housing and during live export
- Stockpersons attitudes towards Livestock Welfare
- Behavioural signs and stress management in cattle

WHAT CAN YOU DO?

Please help us support researchers, educators and others passionate to improve the welfare of animals in ways which will really work.

- Make a donation or bequest
- Donate in memory of a very special friend
- Become an Animal Welfare Trust Sponsor by making a regular contribution

The Trust is administered by veterinary volunteers, which means your entire donation goes towards achieving the Trust's objectives. Your donation will help to enhance the welfare, health and wellbeing of our animals.