

Does the new coronavirus affect older people, or are younger people also susceptible?

People of all ages can be infected by the new coronavirus (2019-nCoV). Older people, and people with pre-existing medical conditions (such as asthma, diabetes, heart disease) appear to be more vulnerable to becoming severely ill with the virus.

WHO advises people of all ages to take steps to protect themselves from the virus, for example by following good hand hygiene and good respiratory hygiene.



At times like this it's good to talk.

Speak in total confidence to a Converge International consultant.

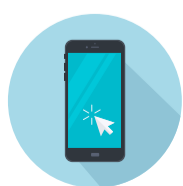
Australia 1300 687 327 New Zealand 0800 666 367 visit convergeinternational.com.au



VIA PHONE



VIA LIVE CHAT



EAP CONNECT APP



EMAIL



FACE-TO-FACE